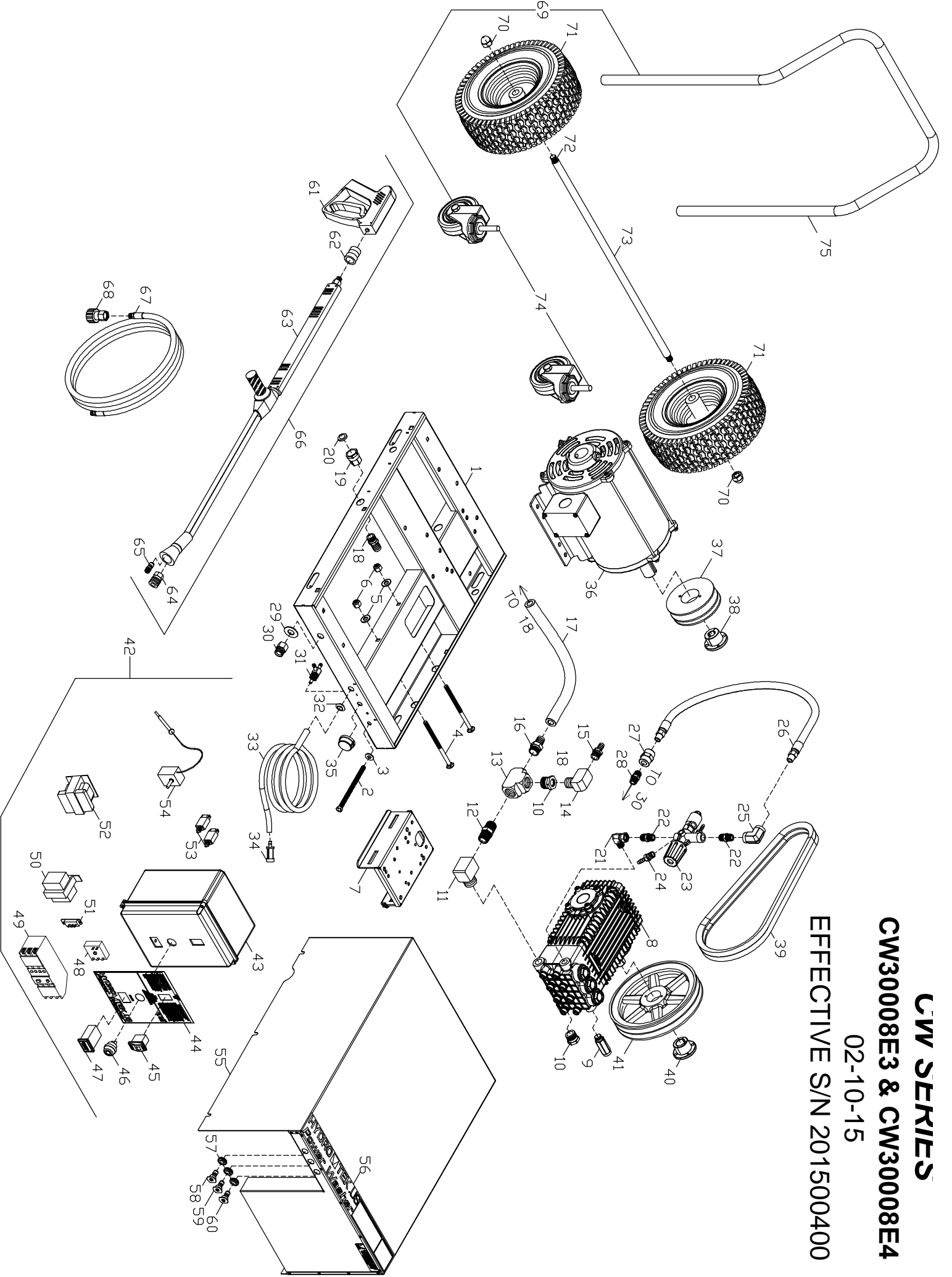


**CW SERIES**  
**CW30008E3 & CW30008E4**  
 02-10-15  
 EFFECTIVE S/N 201500400



# CW30008E3 & CW30008E4 PARTS LIST S/N 201500400

10-Feb-15

1	HCW00	FRAME CW 14 GA. STAINLESS 2015 EZ ALIGN
2	FB660	BOLT 3/8 x 6" ALL THREAD PLATED
3	FWC05	WASHER CUT 5/16 PLATED
4	FB886	CARRIAGE BOLT- 3/8-16 6.50 LONG
5	FWC06	WASHER CUT 3/8 PLATED
6	FNL06	NUT LOCK 3/8-16 PLATED
7	HCS11	CPS PUMP RAIL SLIDE SHORT
8	PG585	PUMP 8.5@3600 & 7.8@35000
9	UP137	PRESSURE RELIEF 3700 PSI BLACK
10	D1128	BUSHING 3/4 x 1/2 BRASS
11	D5512	STREET ELBOW 3/4 BRASS
12	D2089	NIPPLE 3/4 BRASS
13	D6120	TEE 3/4 BRASS
14	D5588	STREET ELBOW 1/2 BRASS
15	D8088	HOSE BARB 1/2 BRASS
16	D8120	HOSE BARB 3/4H x 3/4 MPT
17	DHB75	HOSE 3/4 CLEAR BRAIDED W/SPRING
18	D8128	HOSE BARB 3/4H x 1/2 MPT
19	D008F	GARDEN HA 1/2 NPT FEM
20	D0021	SCREEN WASHER GARDEN H A
21	DE866	SWIVEL 3/8F x 3/8M 90 STEEL
22	DB506	NIPPLE 3/8 STEEL
23	UU264	UNLOADER WITH SWITCH AND CHEM INJECTION
24	D8084	HOSE BARB 1/2H x 1/4 MPT
25	D5047	ELL 1/2F X 3/8 F STEEL
26	DH041	HOSE 1/2 x 25 3500 PSI
27	DD588	COUPLING 1/2in STEEL
28	DB507	NIPPLE 3/8 X 1/2 STEEL
29	FWS09	WASHER 11/16 ID x 1 1/2 OD STAINLESS
30	DQ76P	M22 PLUG x 3/8 NPT FEM
31	VVC10	CHEMICAL METER VALVE MV-100 MOD
32	HL018	HOSE GROMET 5/8
33	DHB04	TUBING; CLEAR BRAIDED; 1/4
34	VF042	STRAINER CHEM (NO CHECK)
35	ECH70	KNOB BLUE .25ID x 1.5 OD
36	ME906	MOTOR 15HP 3525 200-230/460V 3PH
37	KU045	SHEAVE 2BK45H
38	KSH20	BUSHING H x 1 3/8 5/16
39	KSB42	BELT BX42
40	KSH19	BUSHING H24MM
41	KU100	SHEAVE 2BK100H
42	ECW33	CW CONTROL BOX 15 HP 230V 3 PH (CW30008E3)
43	ECW34	CW CONTROL BOX 15 HP 460V 3 PH (CW30008E4)

43	EWB82	ELECT BOX LASER CUT CW/CN BIG
44	GLL38	LABEL CW/CN CON BOX
45	EC406	ROCKER SWITCH 24V RED SPST
46	EC501	BUTTON PUSH, MOMENTARY
47	EM603	HOUR METER 220V
48	ECD24	TIME DELAY 24V ADJ 300 SEC
49	EA053	STARTER 230V 3PH 16-24 AMP (CW30008E4)
	EA100	STARTER 230V 3 POLE 9-45AMP (CW30008E3)
50	BGT10	TRANSFORMER 120/230-24V 40VA
51	EC116	SWITCH, SLIDE 1P2T (CW30008E3)
52	ECT06	TRANSFORMER 460/230 50VA OPEN (CW30008E4)
53	ECF05	CIRCUIT BREAKER 1/2 AMP
54	ECH55	THERMOSTAT; 60-190°
55	HCW55	CW COVER 2015 SS 18GA
56	GLL78	LABEL HYDRO TEK 20.75 x 2.625
57	HLB09	GROMET NOZZLE HOLDER
58	NQ852	NOZZLE /QDC 085 x 15
59	NQ853	NOZZLE /QDC 085 x 25
60	NQ854	NOZZLE /QDC 085 x 40
61	VG200	TRIGGER GUN, INSULATED 4000PSI
62	ECH75	HEAVY DUTY BEND RESTIRTOR-B
63	VWD42	DUAL WAND W/HANDLE STAINLESS
64	NN982	NOZZLE 40 x 25 BRASS
65	DQ04T	COUPLER 1/4" SOCK MALE
66	AVWA3	ULTRA GUN/WAND 48" S/HNDL ADJ
67	DH050	HOSE 3/8 X 50' 3000 PSI
68	DQ76N	M22 COUPLER x 3/8 NPTF
<b>OPTIONAL PARTS</b>		
69	AHS15	WHEEL AND HANDLE KIT
70	FNA09	NUT ACORN 5/8-11
71	HT127	WHEEL&TIRE TURF 13x5.00-6 3/4 BEARING GREY
72	SR625	ROD, THREADED 5/8 ZINCE PLATED
73	SR075	RD TUBE 3/4 x .065 STAINLESS
74	HT004	CASTER 4 INCH
75	HCN20	HANDLE ASSEM.
<b>SERVICE PARTS NOT SHOWN</b>		
	K169	VALVE KIT (1) REQUIRED
	90162500	PISTON OIL SEAL KIT (3) REQUIRED
	K171	SEAL KIT (1) REQUIRED
	K170	SEAL KIT WITH BRASS (3) REQUIRED
	66040309	PISTON KIT (3) REQUIRED
	ABMAN	OPERATION PACKET ULTIMATE LINE