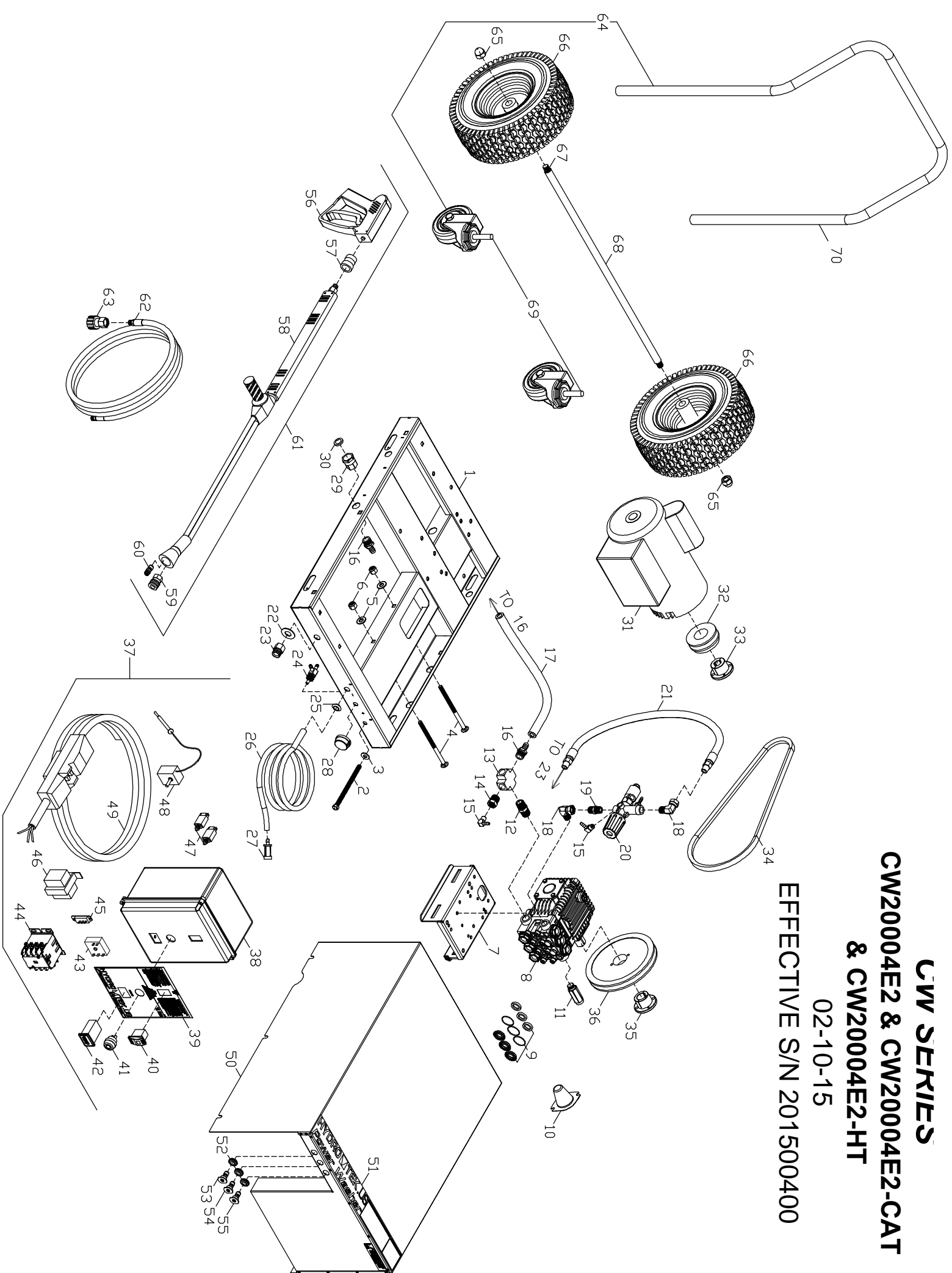


# CW SERIES

## CW20004E2 & CW20004E2-CAT & CW20004E2-HT

02-10-15

EFFECTIVE S/N 201500400



# CW20004E2 & CW20004E2-CAT & CW20004E2-HT PARTS LIST S/N 201500400

10-Feb-15

1	HCW00	FRAME CW 14 GA. STAINLESS 2015 EZ ALIGN
2	FB660	BOLT 3/8 x 6" ALL THREAD PLATED
3	FWC05	WASHER CUT 5/16 PLATED
4	FB886	CARRIAGE BOLT- 3/8-16 6.50 LONG
5	FWC06	WASHER CUT 3/8 PLATED
6	FNL06	NUT LOCK 3/8-16 PLATED
7	HSC12	CPS PUMP RAIL SLIDE TALL
8	PG350	PUMP 3.5@2500 24MM SHAFT (CW20004E2,CW20004E2-HT)
	P4022	PUMP 3CP1120 4 @ 2200 (CW20004E2-CAT)
9	PP652	HIGH TEMP SEAL KIT (CW20004E2-CAT)
	PG202	HIGH TEMP KIT (CW20004E2-HT)
10	PP692	SHAFT PROTECTOR 5 FRAME BELT DRIVE (CW20004E2-CAT)
11	UP128	PRESSURE RELIEF 2800 BLUE
12	D2088	NIPPLE 1/2 BRASS
13	D6788	CROSS 1/2 BRASS NON POTTED
14	D1084	BUSHING 1/2 x 1/4 BRASS
15	D8040	HOSE BARB 1/4 90 ELBOW
16	D8088	HOSE BARB 1/2 BRASS
17	DHC80	HOSE 1/2 LO PRESSURE BLACK
18	DE866	SWIVEL 3/8F x 3/8M 90 STEEL
19	DB506	NIPPLE 3/8 STEEL
20	UU264	UNLOADER WITH SWITCH AND CHEM INJECTION
21	DH026	HOSE 3/8 x 26.5 5000 PSI
22	FWS09	WASHER 11/16 ID x 1 1/2 OD STAINLESS
23	DQ76P	M22 PLUG x 3/8 NPT FEM
24	VVC10	CHEMICAL METER VALVE MV-100 MOD
25	HL018	HOSE GROMET 5/8
26	DHB04	TUBING; CLEAR BRAIDED; 1/4
27	VF042	STRAINER CHEM (NO CHECK)
28	ECH70	KNOB BLUE .25ID x 1.5 OD
29	D008F	GARDEN HA 1/2 NPT FEM
30	D0021	SCREEN WASHER GARDEN H A
31	ME504	MOTOR 5 HP 208/230 1PH 3450 RPM
32	KT032	SHEAVE BK32H
33	KSH12	BUSHING H 3/4
34	KSB39	BELT BX39
35	KSH19	BUSHING H24MM
36	KT080	SHEAVE BK80H
37	ECW22	CW CONTROL BOX ASM 6.5HP 230V 1PH
38	EWB82	ELECT BOX LASER CUT CW/CN BIG
39	GLL38	LABEL CW/CN CON BOX
40	EC406	ROCKER SWITCH 24V RED SPST

41	EC501	BUTTON PUSH, MOMENTARY
42	EM603	HOUR METER 220V
43	ECD24	TIME DELAY 24V ADJ 300 SEC
44	ECC21	CONTACTOR 40 AMP 230V 3POLE
45	EC116	SWITCH, SLIDE 1P2T
46	BGT10	TRANSFORMER 120/230-24V 40VA
47	ECF05	CIRCUIT BREAKER 1/2 AMP
48	ECH55	THERMOSTAT; 60-190°
49	EP125	GFI CORD 240V 30 AMP
50	HCW55	CW COVER 2015 SS 18GA
51	GLL78	LABEL HYDRO TEK 20.75 x 2.625
52	HLB09	GROMET NOZZLE HOLDER
53	NQ502	NOZZLE /QDC 05 x 15
54	NQ503	NOZZLE /QDC 05 x 25
55	NQ504	NOZZLE /QDC 05 x 40
56	VG200	TRIGGER GUN, INSULATED 4000PSI
57	ECH75	HEAVY DUTY BEND RESTIRTOR-B
58	VWD42	DUAL WAND W/HANDLE STAINLESS
59	NN982	NOZZLE 40 x 25 BRASS
60	DQ04T	COUPLER 1/4" SOCK MALE
61	AVWA3	ULTRA GUN/WAND 48" S/HNDL ADJ
62	DH050	HOSE 3/8 X 50' 3000 PSI
63	DQ76N	M22 COUPLER x 3/8 NPTF

**OPTIONAL PARTS**

64	AHS15	WHEEL AND HANDLE KIT
65	FNA09	NUT ACORN 5/8-11
66	HT127	WHEEL&TIRE TURF 13x5.00-6 3/4 BEARING GREY
67	SR625	ROD, THREADED 5/8 ZINCE PLATED
68	SR075	RD TUBE 3/4 x .065 STAINLESS
69	HT004	CASTER 4 INCH
70	HCN20	HANDLE ASSEM.

**SERVICE PARTS NOT SHOWN**

	K123	VALVE KIT (1) REQUIRED (CW20004E2,CW20004E2-HT)
	K159	PISTON OIL SEAL KIT (1) REQUIRED (CW20004E2,CW20004E2-HT)
	K44	SEAL KIT (1) REQUIRED (CW20004E2,CW20004E2-HT)
	K167	SEAL KIT WITH BRASS (3) REQUIRED (CW20004E2,CW20004E2-HT)
	44040109	PISTON KIT (3) REQUIRED (CW20004E2,CW20004E2-HT)
	33062	VALVE KIT (1) REQUIRED (CW20004E2-CAT)
	46839	PISTON OIL SEAL KIT (3) REQUIRED (CW20004E2-CAT)
	46976	PISTON KIT (3) REQUIRED (CW20004E2-CAT)
	ABMAN	OPERATION PACKET ULTIMATE LINE