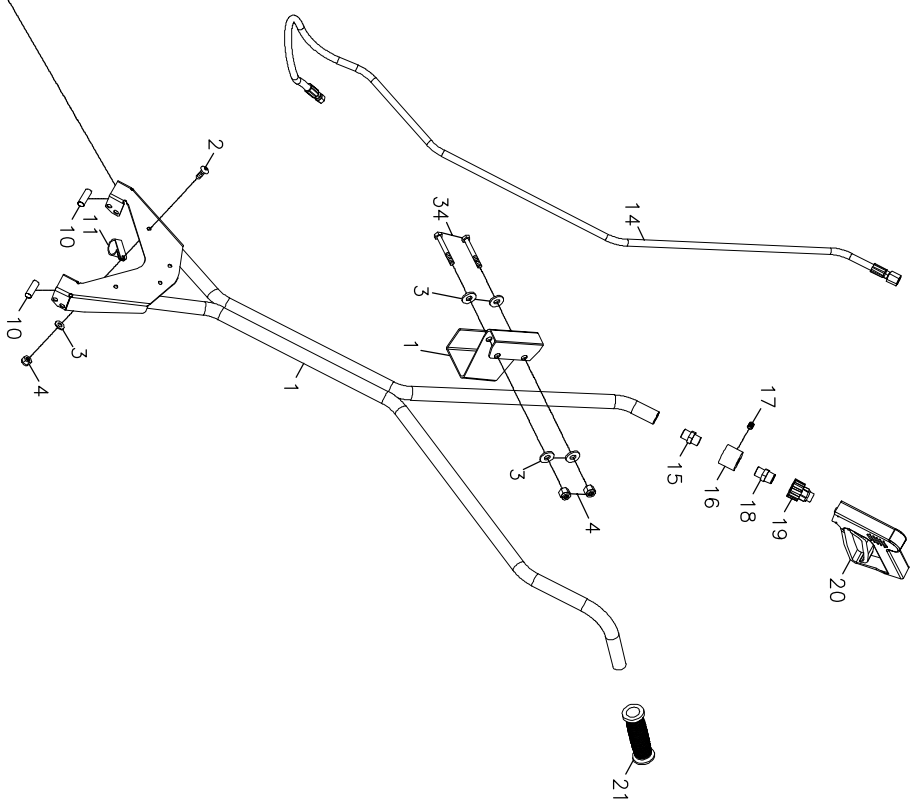
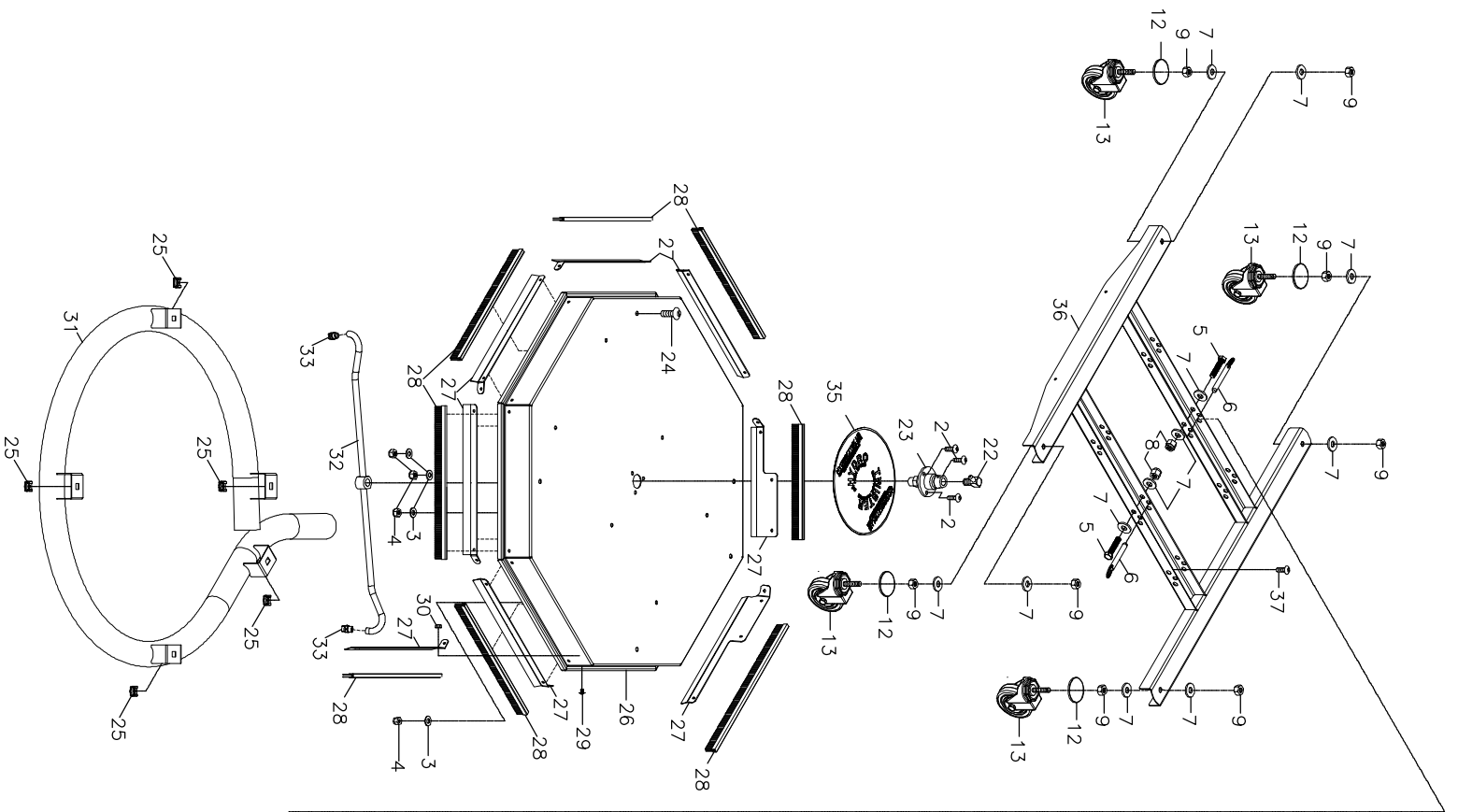
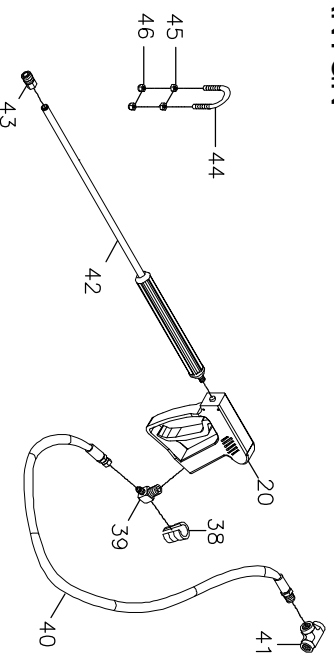


**HYDRO IWSIEH**  
**ANTV5**  
**EFFECTIVE 8-27-12**  
**SN 201202106**



**ANTGN**



# ANTV5 PARTS LIST

S/N201202106

8-27-12

1	HLS71	HANDLE ASSEMBLY - ANTV5	25	FNS45	5/16 - 18 SQUARE SPEED NUT - 14
2	FB410	BOLT 1/4" x 3/4" PHIL HD SLT STNL	26	HLS70	DECK - ANTV5 HEX TWISTER
3	FWS04	WASHER SAE 1/4"SS 9/32" x 5/8"	27	HLS74	BRUSH RETAINER SET
4	FNLS4	NUT LOCK; 1/4-20 316 STAINLESS	28	HLH97	BRUSH SET - 8 PIECES - ANTV5
5	FB641	BOLT 3/8" x 2 1/2" PLD ALL-THREAD	29	FB316	SCREW 10-24 x 3/8 SS TRUSS HD P
6	FP378	QUICK RELEASE PIN 3/8" x 1.8"	30	FNF10	NUT FLANGE SERATED 10-24 STNLS
7	FWC05	WASHER CUT 5/16" PLD	31	HVC28	VAC TUBE ASSEMBLY 2" - 28.5 DIAMETER
8	FNL06	NUT-LOCK 3/8"-16 PLD	32	VAM24	TWISTER ROTOR ARM 24"
9	FNR06	NUT 3/8-16 PLD	33	NM270	NOZZLE 027 X 15 X 1/8 MEG
10	HSC44	HANDEL PIVOT BOLT SPACER SS	34	FB428	BOLT 1/4 X 1 3/4 SS
11	FD050	CLAMP 1/2" RUBBER COATED	35	GLL66	LABEL HYDRO TWISTER 10 x 10.75
12	DQ605	O-RING 3/32 x 1 5/8 x 13/16	36	HLS73	DECK SUPPORT/CASTER BRK ASM
13	HT300	CASTER 3DIA x 15/16" TREAD WIDTH	37	FB409	BOLT 1/4" x 1/2" PHIL HD SLT STNL
14	DTW04	HOSE ASSEM. 1/4" x 63" 5000psi	<b>OPTIONAL</b>		
15	DB504	NIPPLE 1/4" STEEL	38	ECH75	HEAVY DUTY BEND RESTRICTOR
16	HLS10	GUN/TUBING ADAPTER-STEEL	39	D5546	STREET ELL 3/8"MPT x 1/4"JIC
17	FB312	SET SCREW 5/16-18 x 3/8 CUP PO	40	DTW02	HOSE ASSEM. 1/4 X 42 5000PSI
18	DQ74F	TWIST COUPLER 1/4 PLUG FEM-sut	41	DE066	TEE 3/8 STEEL
19	DQ74T	M22 TWIST COUPLER 1/4" MALE	42	VW036	WAND 1/4 X 36; MOLDED GRIP 580
20	VG200	TRIGGER GUN, INSULATED 4000psi	43	DQ04S	INSULATED COUPLER 1/4 SOCK FEM
21	HL010	HAND GRIP 1in MX	44	FB995	U-BOLT 1/4-20 1in GAS PIPE
22	D5546	STREET ELL 3/8"MPT x 1/4"JIC	45	FNR04	NUT 1/4-20 PLAIN STNLS
23	VAM04	TWISTER SWIVEL CARBIDE 4000	46	FNLS4	NUT LOCK; 1/4-20 316 STAINLESS
24	FB509	5/16 X 1/2 TRUSS HEAD STNLS			