

REVISIONS:

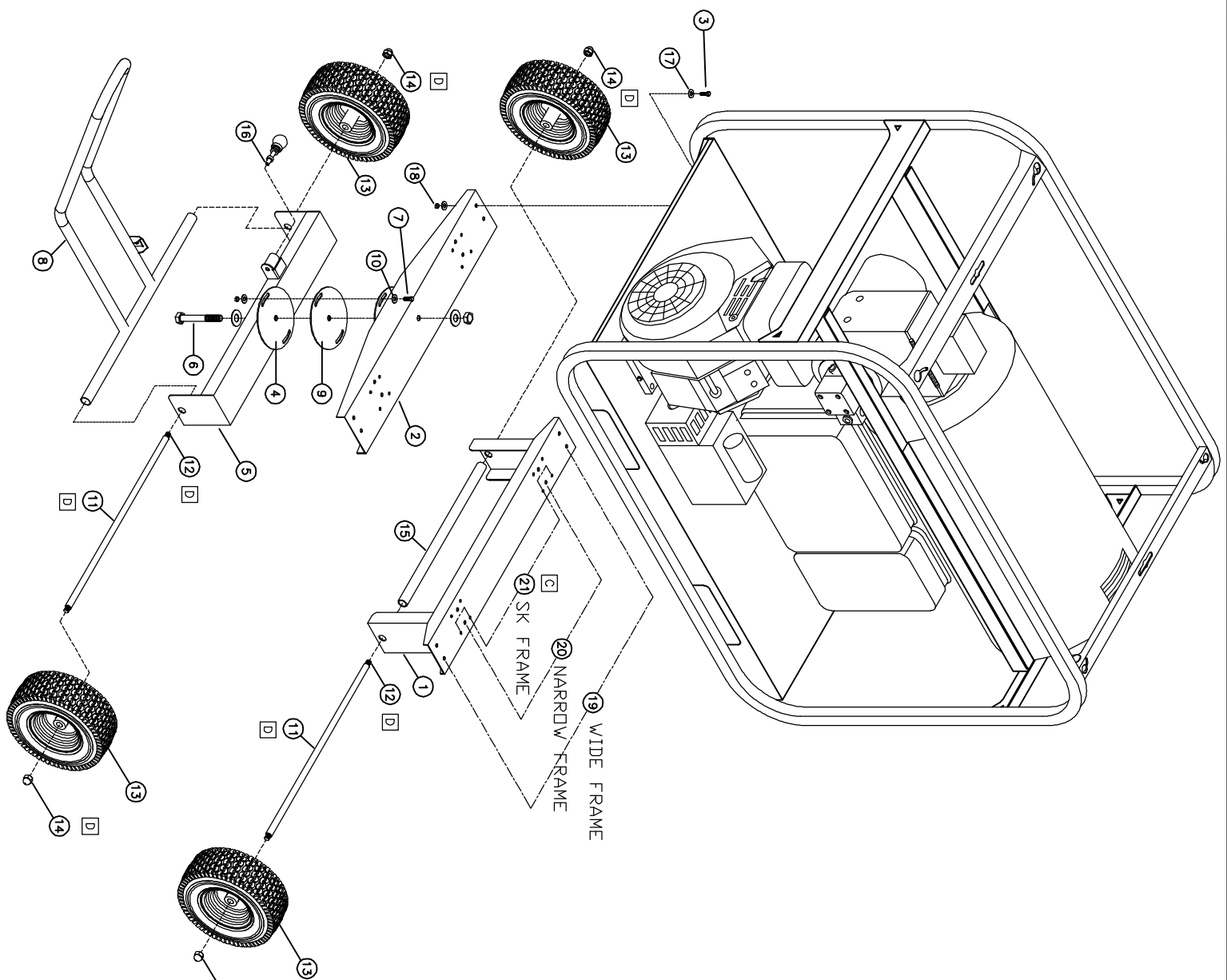
DATE:	ECO:	REV:	DATE:	ECO:	REV:
12-04-07	1974	A	07-03-08	2059	C
04-09-08	2021	B	03-08-12	2477	D

PULL HANDLE WHEEL KIT INSTALLATION

1. INSTALL WHEEL SUPPORTS ① AND ② TO FRAME USING (QTY. 8) 5/16 x 3/4 BOLTS ③ WITH FLAT WASHERS AND LOCK NUTS.
2. APPLY A SMALL AMOUNT OF GREASE TO PIVOT SURFACES ④.
3. ATTACH PIVOT ASSEMBLY ⑤ TO FRONT WHEEL SUPPORT ② WITH STAINLESS STEEL PIVOT PLATE ⑥ BETWEEN THE TWO PARTS. USING 1/2 x 4 1/2 BOLT ⑦ AND (QTY. 2) 5/16 x 3/4 STOP BOLTS ⑧ ALONG WITH STAINLESS FLAT WASHERS ⑨ AND LOCKNUTS. TIGHTEN BOLTS SO THERE IS A SLIGHT DRAG ON PIVOT ASSEMBLY ⑤ WHEN IT IS ROTATED.
4. SLIDE AXLE ⑩ THROUGH PIVOT ASSEMBLY ⑤ AND HANDLE ①.
5. SLIDE AXLE ⑩ THROUGH REAR WHEEL SUPPORT ①. ALSO THROUGH 1.00 AXLE SLEEVE ⑪.
6. SLIDE THREADED ROD ⑫ THROUGH AXLE ⑩ 3/4 SS TUBE.
7. SLIDE TIRES ⑬ ONTO 3/4 SS TUBING ⑩.
8. APPLY SEVERAL DROPS OF THREAD LOCKING COMPOUND TO END OF 5/8 THREADED ROD ⑫ THEN THREAD ⑬ 5/8 ACORN NUTS ONTO THREADED ROD ⑫.
8. TIGHTEN ACORN NUTS ⑬ TO THREADED ROD ⑫ USING 2 15/16 WRENCH.

NOTE

HOLES ① ARE USED ON MACHINES WITH A BASE PLATE MOUNTING HOLE DISTANCE OF 28.75.
 HOLES ② ARE USED ON MACHINES WITH A BASE PLATE MOUNTING HOLE DISTANCE OF 19.00.
 DRILLING WILL BE REQUIRED ON MACHINES MANUFACTURED BEFORE 2001.
 HOLES ③ ARE USED FOR MOUNTING SK FRAME.



AHB12 PULL HANDLE WHEEL KIT 2012

- 1 HSC26 WHEEL KIT SUPPORT FRAME
- 2 HSC26 WHEEL KIT SUPPORT FRAME
- 3 FB512 BOLT 5/16 x 3/4 PLATED **(10)**
- 4 HSC26 WHEEL KIT SUPPORT FRAME
- 5 HSC26 WHEEL KIT SUPPORT FRAME
- 6 FB868 BOLT 1/2 x 4 3/4 PLATED #5
- 7 FB512 BOLT 5/16 x 3/4 PLATED
- 8 HSC32 PULL HANDLE ASM WITH BENT HANDLE
- 9 HL182 PIVOT SHIM-PIVOT WHEEL KIT
- 10 FWS05 WASHER SAE 5/16 SS 11/32 x 11/16 **(4)**
- 11 HSS68 AXLE SLEEVE 3/4 x 32.25 **(2)**
- 12 HSS69 AXLE THREADED ROD 5/8 x 33.625 **(2)**
- 13 HT127 WHEEL&TIRE TURF 13x5.00-6 GREY **(4)**
- 14 FNA09 NUT ACORN 5/8-11 ACORN NICKEL **(4)**
- 15 HSS70 AXLE SLEEVE 1.00 x 24.75
- 16 FP150 POP PIN LOCKING 3/8 x 1.50
- 17 FWC05 WASHER CUT 5/16" PLATED **(16)**
- 18 FNL05 NUT LOCK 5/16-18 PLATED **(10)**