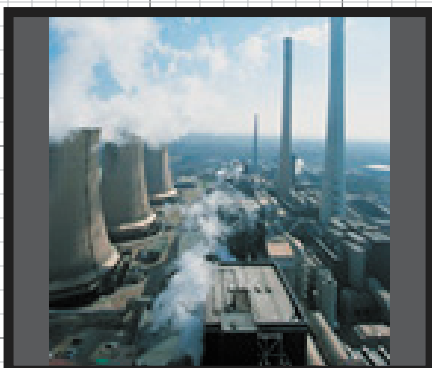
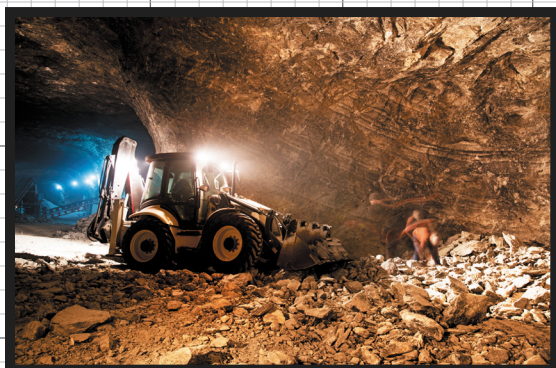


SCX MOBILE WASH SKID

SCX SERIES: DIESEL HEATED, DIESEL ENGINE



BUILT FOR THE EXTREME DUTY USER

 **HYDRO TEK**

MOBILE WASH SKID

SELF CONTAINED - HOT/COLD/STEAM - DIESEL ENGINE: 12v burner

SCX
SERIES



■ Rugged Pro-Tect-It™ Frame:

An extra-large, rugged, powder-coated steel frame surrounds the entire machine protecting its vital components. This Pro-Tect-It chassis has 4-way forklift access as well as built in lifting eyes so the machine can be top lifted with a harness or crane and the eyes double as tie down points for safe transportation. Each frame has double wall steel engine mounts to absorb engine vibration for smooth performance and includes mounting holes to hold optional stainless hose reels.

■ Stainless Steel Panels:

The stainless panels and coil wrap offer lifetime rust resistance and protection while keeping your machine looking new for years to come. (Optional stainless frame and enclosure panels available)

■ High Output 12v Diesel Heating System:

The 12v burner uses dependable PowerLight technology for maximum burner performance and efficiency, heating quickly, up to 250°F, to efficiently clean extra tough grime. No outside power source needed.

■ SpiraLast™ Coil:

The coil is a Hydro Tek manufactured SpiraLast™ heating coil. Robotically fused ½" schedule 80 steel pipe is cold rolled to protect the steel pipe from fatigue and the spiral coil is then surrounded by ceramic insulation and stainless enclosure with double-wall end caps. Ask your dealer about the Lifetime Coil Warranty.

■ High Output Industrial Engines:

Heavy duty, multi cylinder diesel engines are water cooled and include oil filtration and electric key start. (Gas engine models coming soon) A side mount muffler prevents water ingress. Panel mounted engine condition indicator lights to monitor your engine temperature & oil pressure.

■ Belt Driven Pump:

V-belt driven pump, low RPM, cooler and quieter operation for continuous duty performance. EZ Align™ belt tensioning system allows for easy, single bolt, belt tensioning adjustments.

■ Extra Large Fuel Capacity, 36 gallons:

Heavy duty, "roto-molded", rust free fuel tanks with frame mounted, water separating fuel filter to protect against contaminated fuel. Large fuel tanks extend run time, eliminating interruptions to refuel.

■ More Standard Features:

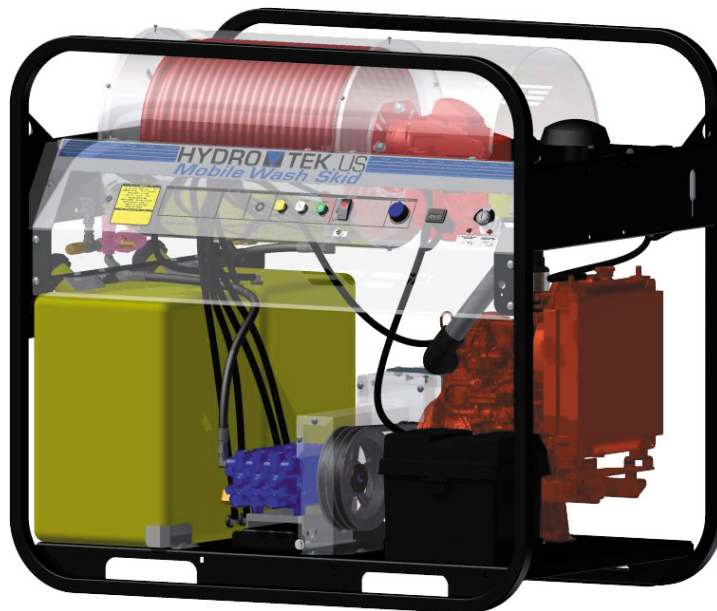
- Burst disc technology, pressure and flow switches, high limit thermostat, and pressure relief valve for operator safety
- Adjustable thermostat up to 250°F on most models, hour meter, and lighted on/off switches are panel mounted for easy operator access
- Heavy duty gun and wand with nozzle storage, 50' hose, quick release nozzle set, snap close battery box
- High flow models are two-gun compatible. Simply add the two-gun kit option to use with two operators to get your job done faster



Mine Specifications Additional features for SCX30005-MS: 8 gallon float tank with low water shutdown, GeniSys flame-out safety control system for the burner, locking battery isolator switch, extended stainless front panel, emergency stop button, stainless drip/drain pan, total relief unloader. Pump, engine, drive & heater coil are operated 25% less than max. ratings for prolonged life.



Oil & Gas Drilling Specifications Additional features for SCX30006-OS Hammerhead: Stainless steel frame, emergency air choke shutdown, stainless drip/drain pan



Specifications

Model	PSI	GPM	Temp.	CC	Engine
SCX30004D12	3000	4	250°F	599	Kubota Diesel
SCX30005-MS *	3000	5	250°F	599	Kubota Diesel
SCX30006-OS *	3000	5.5	250°F	599	Kubota Diesel
SCX30008D12	3000	7.8	200°F	719	Kubota Diesel
SCX35005D12	3500	4.7	250°F	599	Kubota Diesel
SCX35006D12	3500	5.5	250°F	599	Kubota Diesel

*Additional features included for the Mine Spec and Oil Spec models
Specifications may vary, consult factory for custom models

Dimensions: 51½"l x 32½"w x 47"h

Optional Accessories:

Stainless hose reels, 2-gun kit for high flow models, turbo nozzle, hose and wand extensions, wheel kit, trailers & tank skid systems, 12v AGM sealed battery, stainless frame upgrade, stainless panel extension, Hydro Twister® deck and concrete cleaner

HYDRO TEK
CLEANING EQUIPMENT MFG.

2353 Almond Ave. Redlands, CA 92374
phone 800.274.9376 or 1.909.799.9222
www.hydrotek.us fax 909.799.9888

DISTRIBUTED BY: