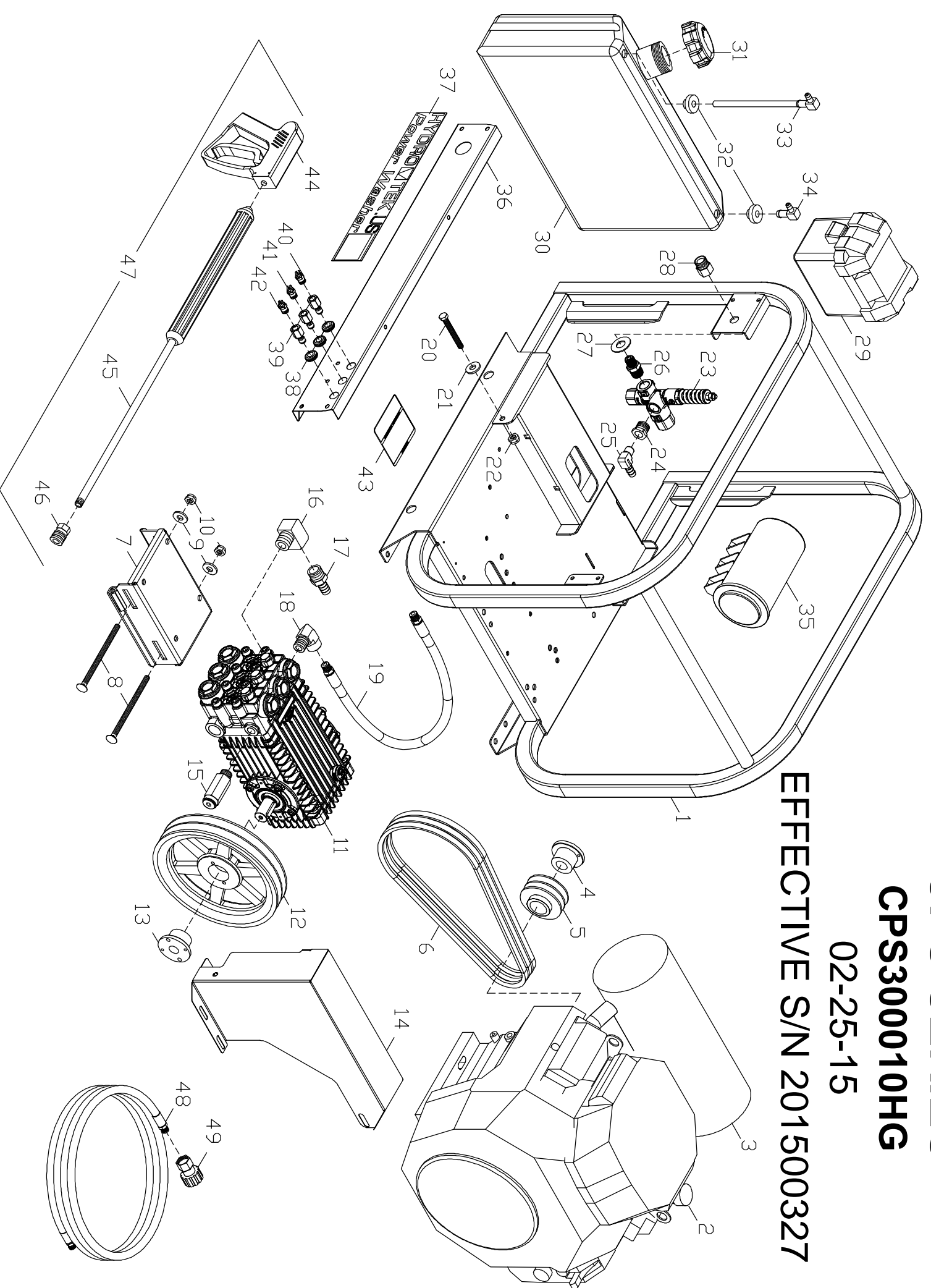


CPS SERIES

CPS300010HG

02-25-15

EFFECTIVE S/N 201500327



CPS300010HG PARTS LIST S/N 201500327

25-Feb-15

1	HCS00	CPS FRAME ASM 10/17/11
2	MH270	ENGINE 688CC HONDA E/S
3	MH688	MUFFLER 688CC HONDA ENGINE
4	KSP18	BUSHING P1 x 1 1/8
5	KV046	SHEAVE 3TB46
6	KSB34	BELT BX34
7	HCS11	CPS PUMP RAIL SLIDE SHORT
8	FB886	CARRIAGE BOLT- 3/8-16 6.50 LONG
9	FWC06	WASHER CUT 3/8 PLATED
10	FNL06	NUT LOCK 3/8-16 PLATED
11	PG585	PUMP TSF2021 3600 @ 8.5 GPM
12	KV090	SHEAVE 3BK90H
13	KSH19	BUSHING H24MM
14	HCP62	BELT GUARD CPS PUMP END
15	UP137	PRESSURE RELIEF 3700PSI BLACK
16	D5512	STREET ELBOW 3/4 BRASS
17	D8169	HOSE BARB 1IN H x 3/4P BRASS
18	DE586	STREET ELL 1/2F x 3/8M STEEL
19	DH041	HOSE 1/2 x 25" 3500PSI
20	FB648	BOLT 3/8 x 3" ALL THREAD
21	FWC05	WASHER CUT 5/16 PLATED
22	FNJ06	NUT LOCK JAM 3/8-16 PLATED
23	UU320	UNLOADER/REGULATOR 4000 @ 21 GREEN SPRING
24	D1086	BUSHING 1/2 x 3/8 BRASS
25	D8060	HOSE BARB 90 DEG 1/2H x 3/8MPT
26	DB507	NIPPLE 1/2 x 3/8 STEEL
27	FWS09	WASHER 11/16 ID x 1 1/2 OD STAINLESS
28	DQ76P	M22 PLUG x 3/8 NPT-F
29	HB050	BATTERY BOX ATTWOOD U1
30	WT036	FUEL TANK 4 GAL GAS RED

31	WT08G	GAS CAP NONVENTED CARB APPROVED
32	DFF04	FUEL TANK BUSHING 1/4
33	DF599	FUEL TANK ADAPTER w/PLASTIC TUBE
34	DFE04	FUEL TANK ELL 1/4
35	MC100	CARBON CANISTER 1000CC
36	HCS13	CPS PANEL 10/18/11
37	GLL78	LABEL HYDRO TEK 20.75 x 2.625
38	HLB09	GROMET NOZLE HOLDER
39	DQ04F	COUPLER 1/4 PLUG FEM
40	NN912	NOZZLE 11 x 15
41	NN914	NOZZLE 11 x 40
42	NN925	NOZZLE 11 x 25
43	GLL30	MAINTENANCE LABEL 4 x 4 SC,SS,SM
44	VG200	TRIGGER GUN, INSULATED 4000psi
45	VW045	WAND 1/4" x 48" MOLDED GRIP
46	DQ04S	COUPLER 1/4 SOCK FEM
47	AVGH4	WAND 48" MOLDED GRIP, GUN, QC
48	DH253	HOSE 1/2 x 50' R2 3500 PSI 3/8 MPS ENDS
49	DQ76N	M22 COUPLER x 3/8 NPTF

SERVICE PARTS NOT SHOWN

	K169	VALVE KIT (1) REQUIRED
	90162500	PISTON OIL SEAL KIT (3) REQUIRED
	K171	SEAL KIT (1) REQUIRED
	K170	SEAL KIT WITH BRASS (3) REQUIRED
	66040309	PISTON KIT (3) REQUIRED
	MH232	OIL FILTER
	MH233	AIR FILTER ELEMENT
	ABMAG	OPERATION PACKET PRO LINE